



Banyule BUG Newsletter

October
2024

Contents

- 1 Point Lonsdale
- 2 Doing "The Block"
- 3 Ride Report
- 4 Gipp St Steps

Our thanks to the Office of Anthony Carbines MP, state member for Ivanhoe, for their support in providing the photocopying facilities for this newsletter.

Club contact points

Web Page: <http://www.banyulebug.org.au/>

Face Book Page: <https://www.facebook.com/groups/banyulebug>

Contributions to this newsletter: Allan Garbutt allang@bigpond.net.au

Dear BUGsters,

At last week's AGM the following people volunteered to serve on the club's executive and committee.

Peter Gurney - President

John Pietka - Vice President

Michael Dunblop - Secretary

John Perkins - Treasurer and Membership

General Committee:

Sue Griffith, also minute secretary

Irene Gerrard, also club history subcommittee lead

Jean Mehrtens, also club cycling interconnectivity subcommittee lead

Bob West

Les Bennett

Chris England

Ralph Nadella

Colin McKnight

The following people also volunteered to generously serve the club as shown:

Ariana Fabris - Facebook administrator

Allan Garbutt - News letter editor

Robert Drummond - Events bike parking coordinator

Maurie Abbott and Colin McKnight - Website

If you have any issues that you wish the club to consider please advise me or the relevant person listed above.

Thanks to all who attended the meeting and special thanks to those who have volunteered in the various capacities.

Peter Gurney

President, Banyule BUG

Reminder. If interested, contact Sue and let her know suegriff@tpg.com.au

Banyule BUG 2 day cycling trip to Point Lonsdale

Dates: Wednesday 23rd October to Thursday 24th October 2024

We will cycle along the Bellarine Rail Trail from South Geelong to Point Lonsdale, about 35 kms one way, along a fairly easy and flat track with a few gradual climbs. Lunch in Drysdale both days.



Interesting article from Maurie about doing “The Block” on a bike.

Folks,

I thought this adventure on a late 1800's bike might be of interest.

I have included a few links below.

Arthur Charles Jeston Richardson (23 February 1872 – 3 April 1939) was an Australian cyclist and mining engineer, who became the first person to circumnavigate the continent of Australia. Used a fixed wheel bike.

Others followed soon after.

His end is not good.

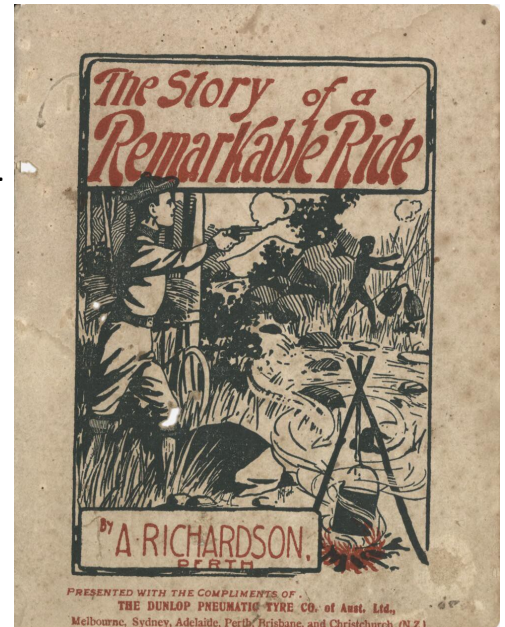
The name initially attracted my attention, my mother is a Richardson.

[Wikipedia Link](#)

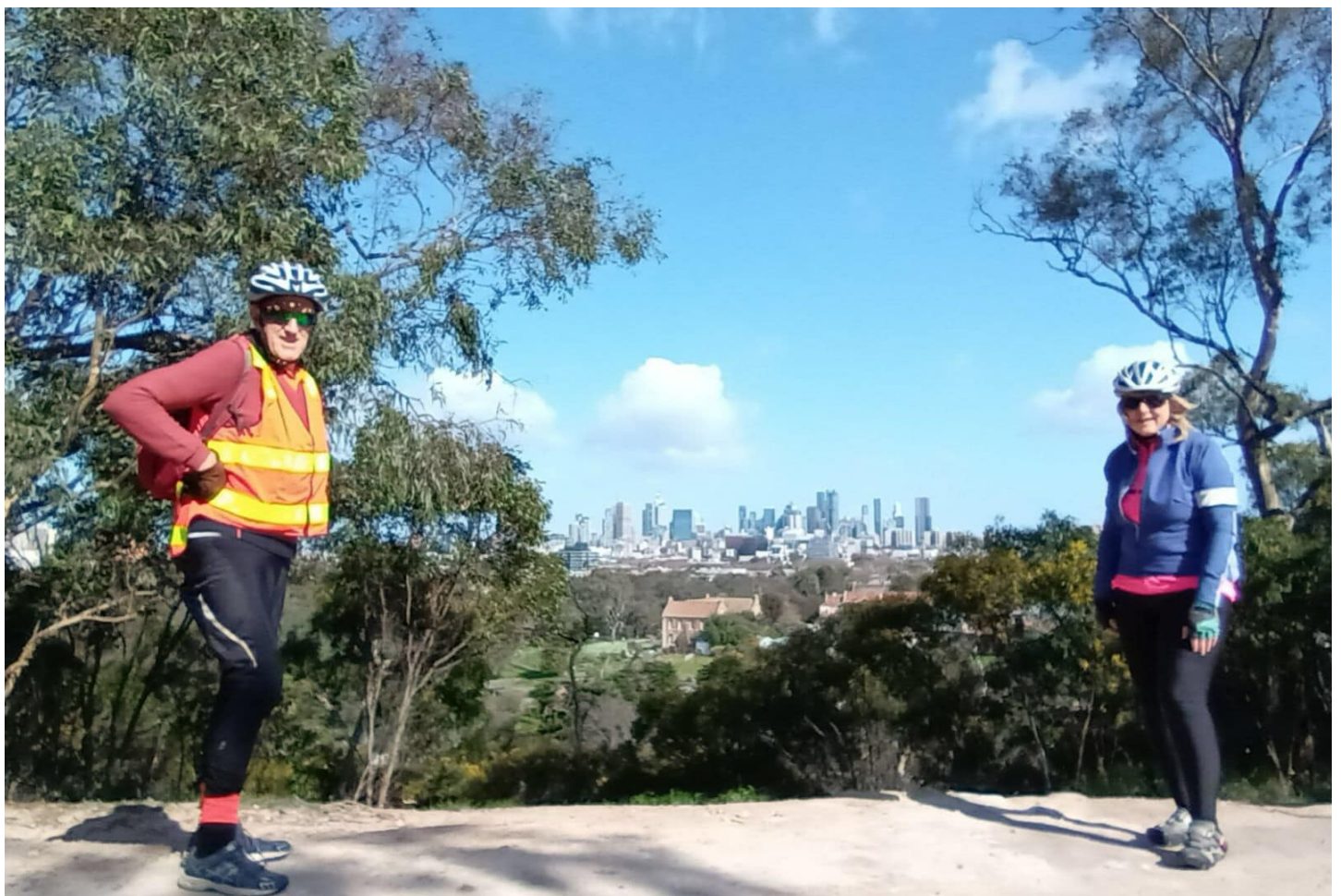
[Australian Dictionary of Biography](#)

[National Library of Australia](#)

Maurie



View of the CBD from the Boulevard/Johnstone St turn off on our way the The Convent. Framed by Arnold and Robyn.



Bikespot

Hi everyone!

I am very pleased to announce the release of the BikeSpot 2023 national dataset (de-identified) and three project reports.

The link below provides a brief summary of some key results and insights for BikeSpot 2023, including the top Safe and Unsafe Spots from across Australia. ([LINK Results and Key findings](#))



There are some witty people around.

It pays to be polite and proactive. I wonder if the clear chimes of a bell can be heard the following Monday.

Water safety devices were not always available or that common in the 20s and 30s, so swimmers would improvise. Here we see swimmers adorned with inflated bicycle tubes to help keep them safe in the water. Not a patch in sight.



Ride Report

Castlemaine to Maldon Reconnoitre

After a brief absence from BBUG rides it was good to see Allan Peacock back in the mix and straight away he is into doing what he does well i.e. mapping bike ride trails. Having mapped nearly all the alleys and cobble stone streets around Melbourne he's now setting his eyes and compass for rides in the country.

"I want to try this you beaut rail trail from Castlemaine to Maldon, do you want to give it a try? I've looked at it on Google Earth and its got a good surface and easy rail gradient."

So Lou and I said OK.

Date set Friday, 23rd August.

Lou arrives with his TLC (Toyota Land Cruiser) to carry the bikes and Allen arrives with his arms full of square pipes, nuts, bolts, straps and allen keys. Quickly in the hands of the electrician and plumber the loose items took the form of a 4xbike carrier which slotted nicely into the towbar of TLC, taken off again for adjustments then back into the towbar. Loaded the three bikes, their secure mounting verified by the three owners and we were away.



Time driving to Castlemaine was about an hour and a half but time went quickly as Allen entertained/horrified us with stories of life as an apprentice plumber with Castlemaine Gas (many, many years ago). Tales of practical jokes and non-standard work practices with the volatile gaseous substance left us wondering how Castlemaine didn't go up in a mushroom cloud. Did a brief tour in TLC of Castlemaine's spots of interest, and, at the botanical gardens we parked (close to loo) untethered bikes and we were away. Trail was well signposted with yellow arrows pointing this way, that way. Early trail surface was fine but it soon

became apparent that the view from the Google Earth satellite 750 kilometres above the earth's crust was not an accurate portrayal of the surface at ground level. Sections of rocky outcrops and loose gravel covered sections of the trail. And, downhill, suddenly hitting corrugations you had to blink like a stroboscope to get a still picture of landscape.

Technically it's not a rail trail. It's 18kms of 4WD track that runs alongside the Castlemaine to Maldon railway with all its imperfections and lots of undulations (not as big as the Caveat undulations). Apparently there is an annual event, cyclists vs train, attracting many cyclists. I strongly recommend a Ross/Tapper style bike if you seriously intend challenging the train.

Notwithstanding the above the trail winds through beautiful landscapes and creeks, past historic trestle bridges and the Muckleford Railway Station, a really interesting place.



Just under two hours riding and we were in Maldon cruising down the main street commenting that in the twenty years or so since we were last there it hadn't changed. Of course. Maldon is a heritage listed town, it's not supposed to change. Riding and gazing at the historical buildings I heard Lou cry out "Castlemaine rock". I turned abruptly expecting to find a piece of gold on the roadside only to see Lou disappearing into the Lolly Shop. I did not know but the Barnes Castlemaine Rock lolly was famous. It's a boiled candy dating back to the 1850's gold rush days. Unfortunately, the factory manufacturing the famous lolly closed down in 2018 unable to produce their product at a competitive price. No

Castlemaine Rock but we brought a jar of similar Maldon Rock produced locally of slightly different ingredients.

Enjoyed a great lunch at the bakery and time to head back to the TLC in Castlemaine 23kms away. Different route going back, a bit longer, but mostly a sealed surface and definitely smoother and much quicker. And being quicker was important as we were now racing the blue and yellow BOM radar clouds heading our way. The rain caught us about 10kms to go. Out with the waterproofs. We got back to the TLC very wet and considerable discussion ensued as to whether we got wet from our waterproofs letting rain in or from our body moisture rising within. Scientific theories soon gave way to the need to get out of rain and get dry.

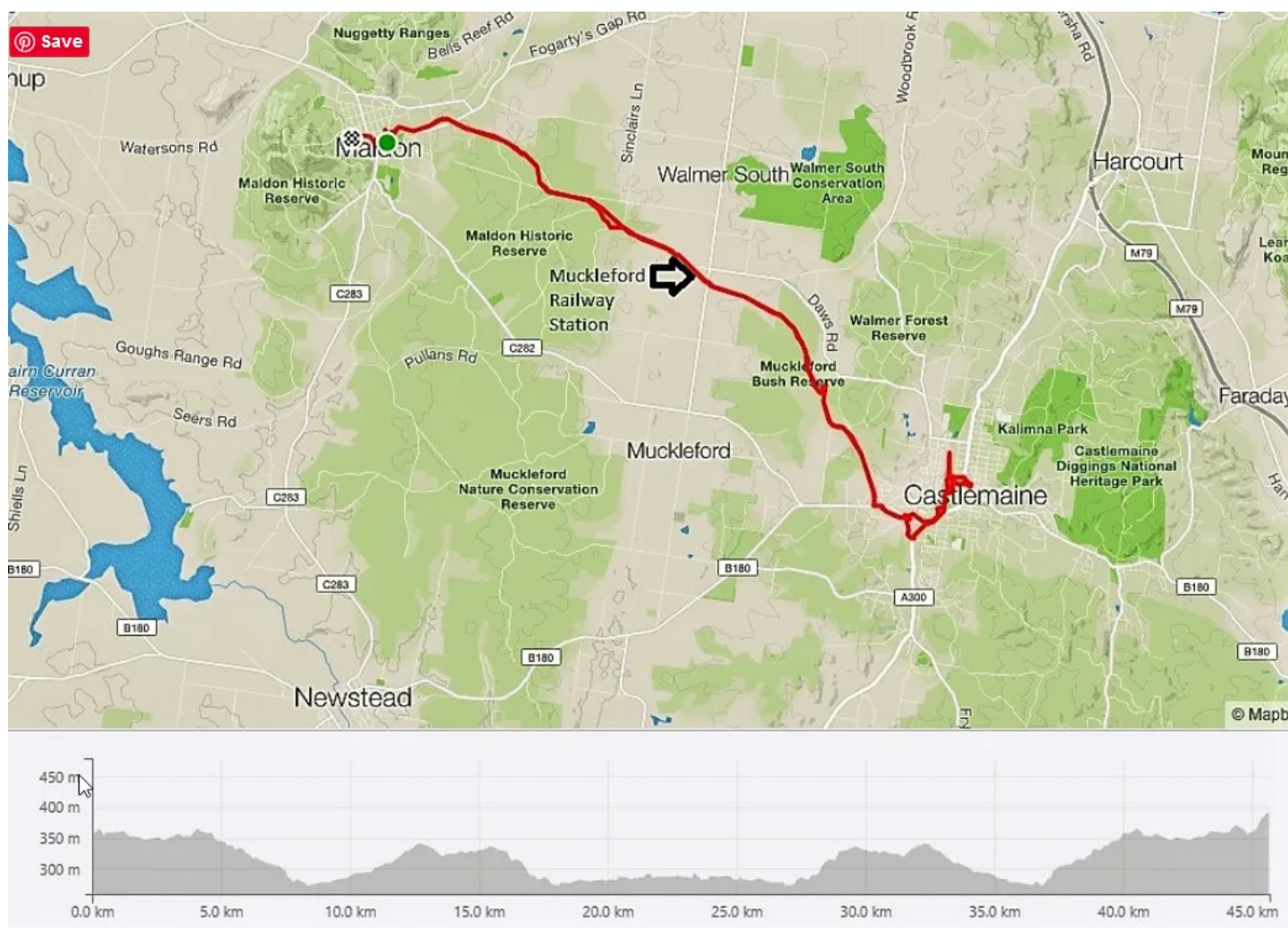
Lucky Lou thoughtfully brought some towels and we were able to dry off a bit and sit on them to prevent seats getting wet. I'd seen the towels in the back of the TLC on the way up but assumed they were for throwing in if the going got tough.

The blue and yellow BOM clouds passed over and were heading for Melbourne. Driving back on the Calder freeway the rain had stopped but road was very wet. Amazingly, for quite some time we were spanned by a couple of bright rainbows. The three of us had been told some time ago that there was not a pot of gold under the rainbow so we didn't waste time looking and drove straight home.

So, to review the trail. Historical towns Castlemaine and Maldon are definitely worth a bike ride. The actual trail route is interesting and providing you keep alert and don't rush it's fine. Probably not ideal for a road bike but gravel bike, no problem. The return journey is mostly sealed, only minor undulations, an easy pedal. Let's see if it makes it onto our ride schedule.

Riders: JohnZP (scribe), Lou Bosco, Allan Peacock

The following is not an actual track, but it gives an idea of the route and elevation.



Video. (Not actual ride)

Here is a 5 minute clip from 3 years ago. This is not the actual ride done by the above, but a clip from YouTube. It perhaps gives some idea of the cycling conditions. [\(Link\)](#)

Veloway

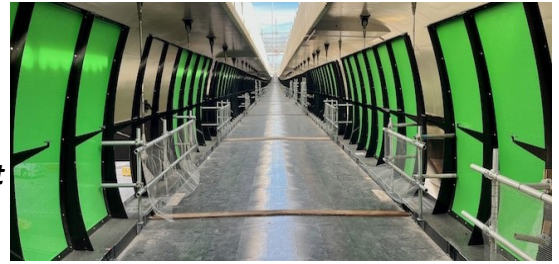
The much anticipated Veloway has reached the half way mark and is progressing. Riders are waiting eagerly to experience what will be a safe and exciting experience.

Read a report from Ride On.

Veloway hits halfway mark [\(Link\)](#)

The elevated Veloway from Footscray to the city has hit the halfway mark, and a long stretch of the path is now connected.

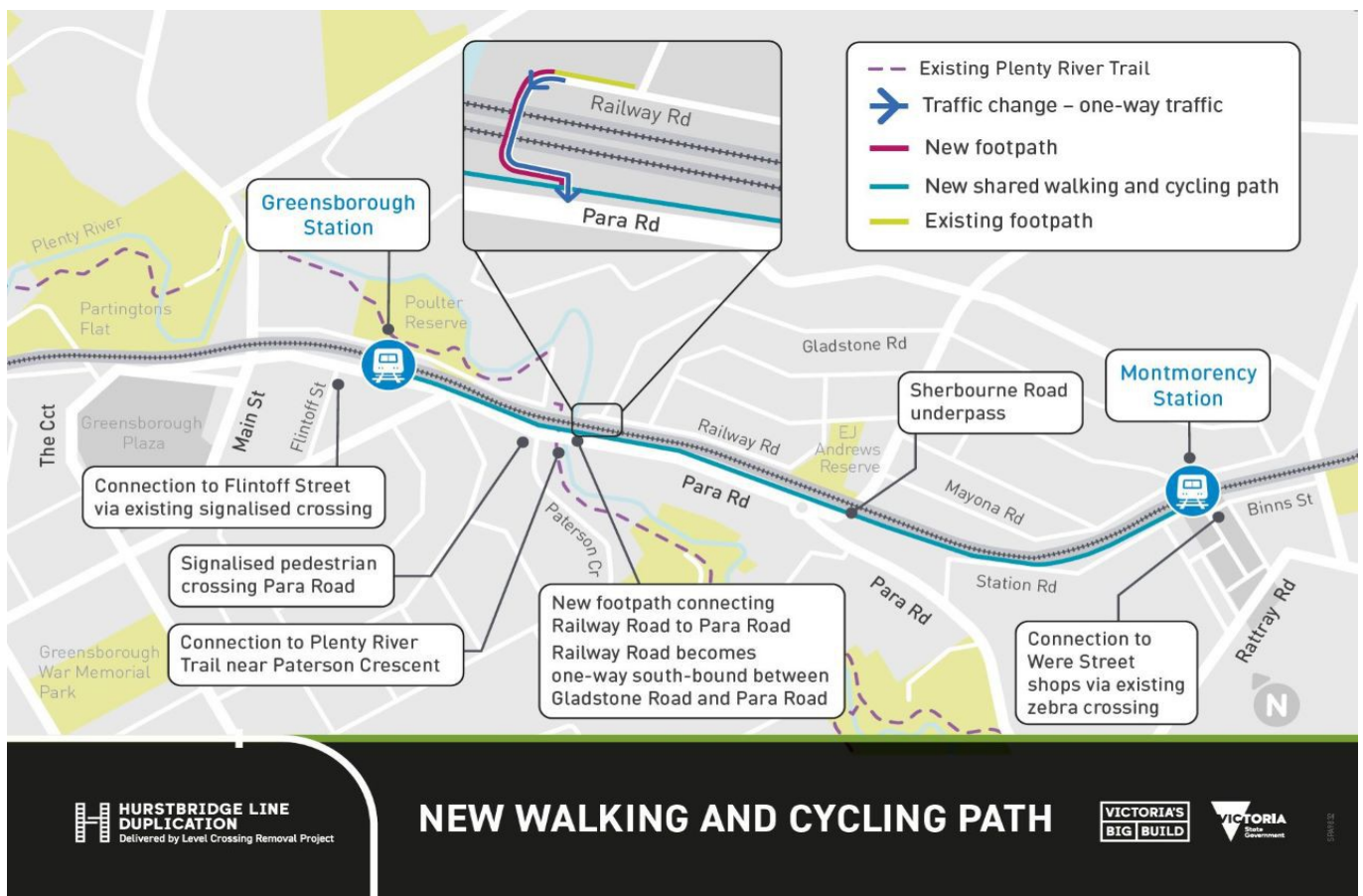
A sense of the experience that will greet riders when it opens next year is now possible, and it's one of shock.



Greensborough to Montmorency SUP

Recent months have seen renewed activity along Para/Sherbourne Rds as part of the shared user path between Greensborough and Montmorency. All cycle users are looking forward to the day when it will be possible to cycle in much improved safety between the two centres and further in the future, on to Eltham. The Sherbourne Rd underpass will be a feature of the trail.

Here is a map that gives a good overview of the concept between Greensborough and Montmorency.



Follow the link here for more information. [\(Link\)](#)

Gipps Street link takes shape

Information from

<https://bicyclenetwork.com.au>

Riders can now get a glimpse of the future ramp that will dramatically change the experience of riding the Main Yarra Trail through Abbotsford.

The ramp structure along the river's edge to the north of the construction zone is completed with the platforms and riding surface in place. Balustrades will come soon.

The erection of the ramp under the Collins Bridge and to the south will be underway over the next few months, along with the construction of piers for the ramp that curves back and up to Gipps Street. ([Link](#))



From Jean Mertens



STREETS PEOPLE LOVE CAMPAIGN

BUG members can help this campaign along by contacting candidates in their wards to ask them to complete our survey and sign this pledge. Jean Mehrstens has sent the survey to 38 candidates and received 18 responses - check the Streets People Love Website to see if candidates in your ward have responded. Banyule City Council manages 82% of streets in the city, and they have a comprehensive strategy to make it a safer place to ride and walk. We need to encourage them to put the plan into action and to evaluate the outcomes.

THANK YOU

JEAN

--

Jean Mehrstens

May October bring to you great and safe cycling experiences. May the sun shine on your face and the wind be at your back.

Record your experiences and forward them to Allan Garbut allang@bigpond.net.au for inclusion in our next newsletter.