



Banyule BUG Newsletter

December
2023

Contents
Kelvin's Birthday
Ride report
Great Vic
Cycling in Banyule

***Our thanks to the
Office of Anthony
Carbines MP, state
member for Ivanhoe,
for their support in
providing the
photocopying
facilities for this
newsletter.***

Kelvin's 96th Birthday ride

What an exciting and appropriate way to celebrate Kelvin's birthday – with a bike ride. Kelvin is a regular rider with the Latte group taking part in all of our Tuesday and Friday rides. This ride to Churchill Caffé' at Mont Albert was a regular, scheduled ride. What made it extra special was the large number of riders who took part to help make it a special day for Kelvin, plus "The Age" newspaper covered the event and to render a number of songs, the 'Chordites' (mens' choir) all combined to make this a very special day for Kelvin indeed. You can follow proceedings at the club [FB Page](#).



A special mention goes to Peter Gurney (Club President) who worked hard at putting this memorable day together.

Ride Report

The Latte Group ventured far afield on a ride during November. Riding from Yarraman Station to Mordialloc Station including a loop around the Seaford Wetlands was a very interesting ride. From Yarraman, we rode along the Dandenong Creek Trail then onto the Patterson River Trail. The loop around Seaford Wetlands culminated at Carrum where we had lunch and a look at the Bay. Following lunch we cycled along the Mordialloc Main Drain to Mordialloc Station for the trip to Richmond Station where we cycled home.

Seaford Wetlands is a very special place. It is a swamp of note, protected under the international [Ramsar Convention](#) and is the home to many migratory bird species plus indigenous species of plant, animal and bird life. The day involved some train travel, but was well worth it. Here is a [link to the ride](#).



Crossing the Patterson River on the interesting "Ship Bridge".



Viewing the wetlands from the lookout perched above the swamp

From Bicycle Network



This is a route that Banyule Bug riders often take so this is good information from BN. It is great to see cyclists safety has been taken into account during construction.

22 November 2023

Chandler Highway lanes modified for building project ([Banyule BUG riding the new lane](#))

Riders along the Chandler Highway route in Alphington will notice temporary changes to the bike lane configuration due to a construction project within the former paper mill site.

Builders needed to close the path adjacent to the site during working hours to obtain access to the development site on the east side of the highway.

A complex set of staged traffic management arrangements, which vary between time of day and periods of construction activity, has been put in place.

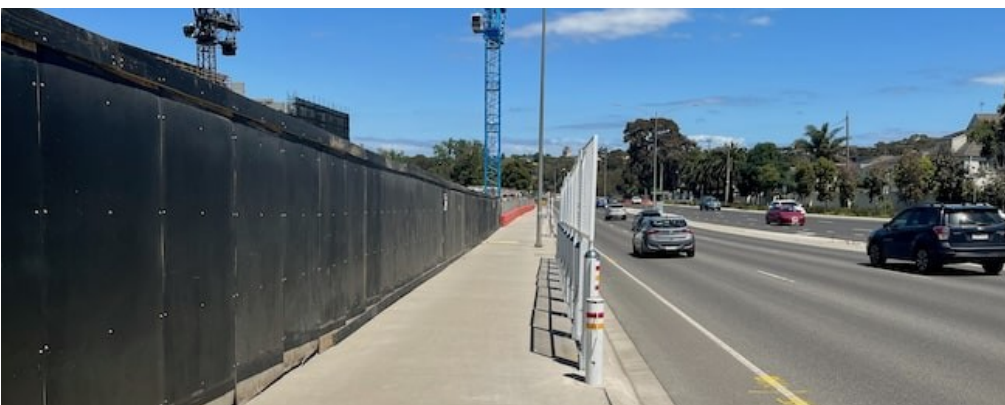
The Chandler Highway through this part of Alphington has a unique set of bike facilities with a unidirectional bike lane on each side, but with a two-way shared path on the old rail bridge on the east side of the road.

Significant numbers of road riders use the route to connect to the Boulevard circuit just over the Yarra River.

Pedestrians also use the path to connect to the trail along the Yarra.

The solution, carefully developed by the builder Ironside and the City of Yarra, with input from Bicycle Network, has enabled the route to be kept open with only minor impacts on riders and pedestrians.

Riders should note that loading bays positioned on the path in front of the site will be closed during work times. The bays have been fitted with bollards and screens to ensure protection for riders in the bike lane during working hours.



The southbound bike lane on the road will remain open during works but southbound pedestrians will need to cross to the other side of the highway towards the underpass at the bridge.

Northbound riders will be unable to use the shared path on the old rail bridge. They will be directed to cross to the west side of the highway at the Yarra to use the northbound bike lane, which has been separated from traffic with affixed bollards.

Northbound pedestrian can use to old bridge to cross the Yarra and can then use the underpass on the north side to get to the west side of the highway.

Outside of working hours the path on the eastern sides reverts to pre-existing conditions.

The builder will undertake regular sweeping of the lane to keep it clear of loose stones.

This article was made possible by the support of [Bicycle Network's members](#) who enable us to make bike riding better in Australia.

Safe riding

As cyclists we are all keenly aware of keeping safe on our roads. The difference between being safe or being injured can come down to centimetres. So, if you are planning your next road ride, this site will help you in determining a safe route. [How to plan a bike route.](#)

A regular 'passenger' on many of our scheduled bike rides is "Geordie" (I think the name is correct). He quite happily sits in the pannier and watches the world go by, then sits patiently in the shade of a tree while his owner has a refreshment break.



The world's 280 million electric bikes and mopeds are cutting demand for oil far more than electric cars

"We hop in the car to get groceries or drop kids at school. But while the car is convenient, these short trips add up in terms of emissions, pollution and petrol cost.

Close to half (44%) of all Australian commuter trips are by car – and under 10km. Of Perth's 4.2 million daily car trips, 2.8 million are for distances of less than 2km.

This is common in wealthier countries. In the United States, a staggering 60% of all car trips cover [less than 10km](#)."

This article from "The Conversation" is very interesting and well worth reading. It demonstrates how e-cycles are much more than recreational or fitness devices – they are also having a significant impact on keeping climate change under control. [\(Link\)](#)

Great Vic

The last week has been a "shocker" in terms of wet weather. It seems like it has rained continually, curtailing cycling activity. Spare a thought for our cycling friends in eastern Victoria on the Great Vic. It seems they have copped the brunt of the bad weather. Here is a photograph from Kevin Balaam at Buchan (I think) under very low, grey and threatening clouds.



The Banyule BUG Lycra Group recently completed a lovely group cycle through Oakleigh. Along the way they took this selfie from the site of the old Burwood drive-in. I imagine many people would have strong memories of a visit to this drive-in from years past. It was, in its day, a Melbourne icon.



This is well worth following up in the interests of improving cycling facilities in Banyule.

Folks,

Pete de Prez received the message below from Tom Melican, a member of the Banyule Council. Tom is also an advocate for bike riding and safety, a very keen cyclist (I think he has 13 bikes) and a long-term member of the Banyule BUG.

Councillor Melican is inviting comments about safety improvements for bike riding in Banyule. An open invitation - go for it!

And a further development! Cr Melican has just been voted Mayor of Banyule for the next year. Keen cyclist, Mayor he has a lot of influence and loves to promote cycling. Go for it even harder!

Cheers,

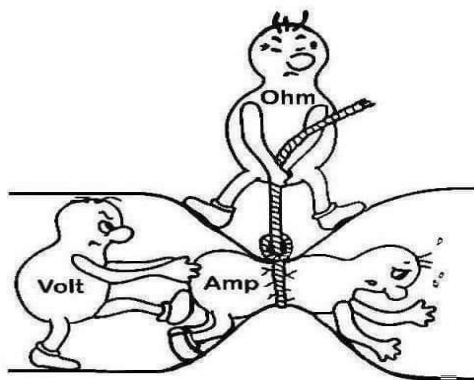
John Pe

Banyule BUG Christmas Feast

For many years, our club has had its annual Club Christmas Feast at Studley Park. However, reconstruction of the site forced us to look further afield and it was decided to head to the rolling hills of Ruffy Lake Park. As usual, this involved a short cycle from Warringal Park to to reach the location of the feast. This proved to be a most wise choice of location as a very large number of cyclists made the trek in lovely weather. A great gathering with lots of fine food and animated conversation ensued. Next year? Well who knows?



This cartoon might help those trying to get their head around some e-bike terminology.



Geelong moves ahead with streetscape vision (From BN)

Geelong's plan to transform its central business area into a people-friendly and attractive streetscape has progressed with the release of master plans for Mercer and Gheringhap Streets, two gateways to the city.

The plans, which will be implemented over the coming years, have a strong active transport and landscaping thrust and an emphasis on accessibility.

The city is responding to a trend evident across the globe where visitors and shoppers have turned against car-choked business districts, threatening their economic future. [\(Link\)](#)

Australia's first e-bike rebates go live in Tasmania. [\(Link\)](#)

Governments around the world are investing in e-bike rebates to accelerate adoption and tackle climate change.

This week, Tasmania became the first Australian state to join them with a \$1.2 million e-transport package.

Within this, Tasmanian e-bike buyers will get a helping hand after 17 November through a \$200,000 [e-bike and e-scooter rebate scheme](#) that will cover up to 12% of the cost of a bike.

Tasmania's Minister for Environment and Climate Change, Roger Jaensch, says the e-transport package is delivering on actions in the government's Climate Change Action Plan.

"Transport is a significant contributor to greenhouse gas emissions," Minister Jaensch said.

"Tasmania's Climate Change Action Plan includes actions to reduce emissions from our transport sector by increasing the uptake of electric vehicles, and public and active transport.

"Our government's e-transport package will provide rebates on the purchase of electric vehicles and e-mobility devices such as e-bikes, as well as interest free loans for home chargers."

To be eligible for a rebate you must be Tasmanian and have purchased an e-bike or cargo e-bike from a Tasmanian retailer after 17 November. The rebates are not available for businesses.

Rebates of up to \$500 are available for standard e-bikes and up to \$1000 for cargo e-bikes. This means on a \$4000 e-bike a rebate of \$480 would be available, or on a \$8000 e-cargo bike it would be \$960.

The rebates will be available in four rounds with \$50,000 in rebates available in each round. Round 1 starts on 17 November, round 2 on 17 December, round 3 on 17 January and round 4 on 17 February.

The scheme requires an eligible e-bike to have been purchased before owners can apply for the rebate, which

means people will have to take their chances on getting a rebate in one of the rounds.

To be eligible, e-bikes must meet current legal requirements of a 200-watt motor or 250-watt motor speed limited to 25km/h.

The Tasmanian government is the first in Australia to offer e-bike grants. Its decision was based on the success of similar programs in the US, Canada and European countries – and submissions from Bicycle Network.

As the scheme focuses on people swapping a car trip for an e-bike trip, retailers are being asked to point out e-bike models with useful transport features. These include:

- rear and front racks for baskets and panniers
- mud and chain guards
- a kickstand
- wired-in front and back lights
- sufficient battery range.

The \$200,000 funding pool is also available to people buying e-scooters and e-skateboards, with rebates up to \$250.

To measure the effectiveness of the rebate, recipients will be asked to fill out a survey once they buy a bike and again after six months.

The government has also launched a \$750,000 rebate scheme for fully-electric vehicles. It is offering \$2000 for new and second-hand electric cars brought into Tasmania for the first time.

Banyule BUG Face Book Page

A reminder that Banyule BUG now has its very own FB page. It is a vibrant and active page where you are able to contribute to the very latest in news as it affects our (should that be affects?) club.

We look forward to seeing your contribution to the page.

[Banyule Bicycle Users Group](#)

Darebin Loves Bikes

You may be interested in reading the final edition for 2023 from [Darebin Loves Bikes](#). It is packed with information about cycling in and around Darebin.

Late and Breaking News

The Walmer St Bridge is ready to reopen. This is great and long awaited news for all riders of the Yarra Trail to the CBD. [\(Link\)](#)

Apologies for the lateness of this newsletter. I have had a lot going on in my life. Ed.

On behalf of the global network that produces the Banyule BUG Newsletter, I wish you all a very Merry Christmas and a prosperous New Year. And as always – cycle with safety first in mind – It's a jungle out there.

Allan Garbutt
allang@bigpond.net.au